



USER GUIDE
Version 2.9

SATEL Configuration Manager
Setup and configuration program
for SATELLINE radio modem

1 TABLE OF CONTENTS

1	TABLE OF CONTENTS	2
2	GENERAL	3
2.1	ABOUT SATEL CONFIGURATION MANAGER	3
3	QUICK GUIDE TO START USING THE PROGRAM	4
3.1	QUICKSTART	4
4	MAIN LEVEL	5
4.1	MAIN INFORMATION TABS	5
4.1.1	Connect/Disconnect.....	5
4.1.2	Read Settings.....	5
4.1.3	Write Settings.....	5
4.1.4	Reset Settings.....	5
5	MAINTENANCE LEVEL (FOR AUTHORIZED DEALER)	6
5.1	FLASH HARDWARE AND CHANNEL SELECTOR	6
5.1.1	Flash Hardware	6
5.1.2	Channel Selector	7
6	LOAD AND SAVE CONFIGURATIONS	9
6.1	LOAD CONFIGURATION FROM FILE	9
6.2	SAVE CONFIGURATION TO FILE.....	9
6.3	SAVE CONFIGURATION AS TEXT.....	9
7	SETUP LEVEL	10
7.1	RADIO MODEM INFO	10
7.2	MODEM SETTINGS	10
7.2.1	How to change values	10
7.2.2	Basic Settings.....	10
7.2.3	Addressing	11
7.2.4	Factory Settings.....	12
7.3	PROGRAM PREFERENCES	13
7.4	USER LEVEL SETTINGS	14
7.5	LOGS.....	14

4 MAIN LEVEL

4.1 Main Information Tabs

Connect/Disconnect, Read Settings, Write Settings, Reset Settings.



4.1.1 Connect/Disconnect

Opens and closes the connection between the modem and PC.

4.1.2 Read Settings

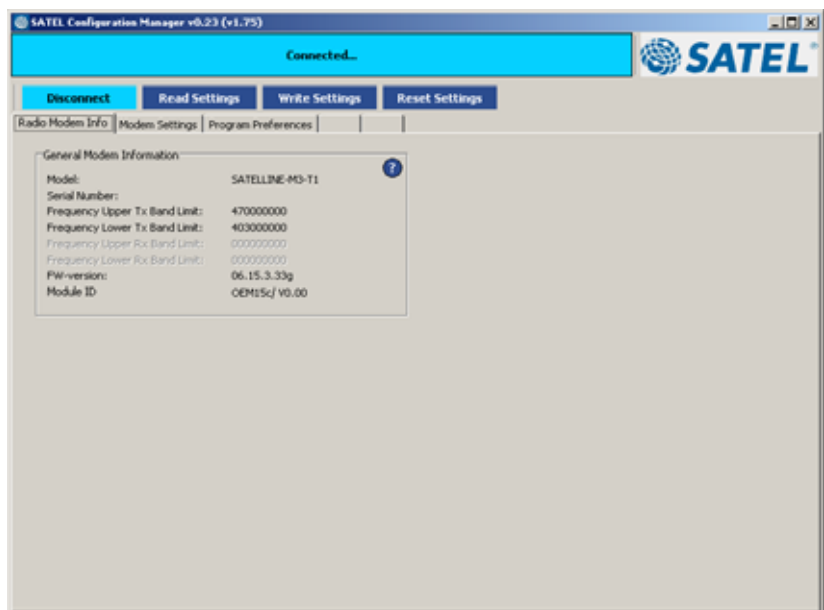
Loads settings from the modem.

4.1.3 Write Settings

Writes settings to the modem.

4.1.4 Reset Settings

Resets changes and retrieves settings to their value as loaded from the modem prior to saving.



5 MAINTENANCE LEVEL (for authorized dealer)

5.1 Flash Hardware and Channel Selector

Note! Flash Hardware and Channel Selector only in maintenance/factory level.

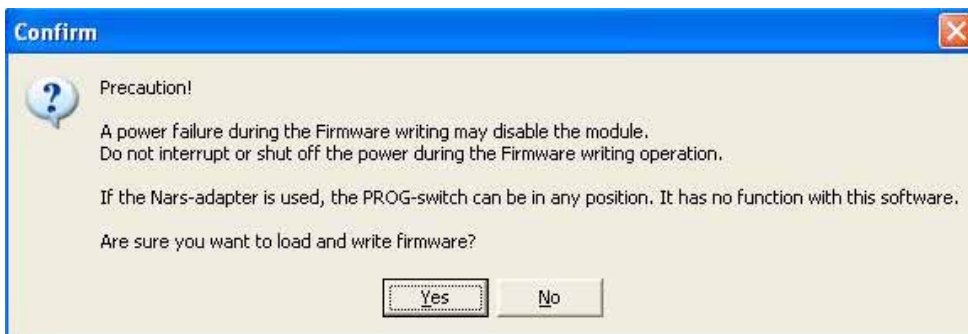
5.1.1 Flash Hardware

Writes new Firmware to the modem.

To Flash the Firmware, establish the connection as described before.

To check the FW-version, open the "Radio Modem Info" tab and press "Read Settings"

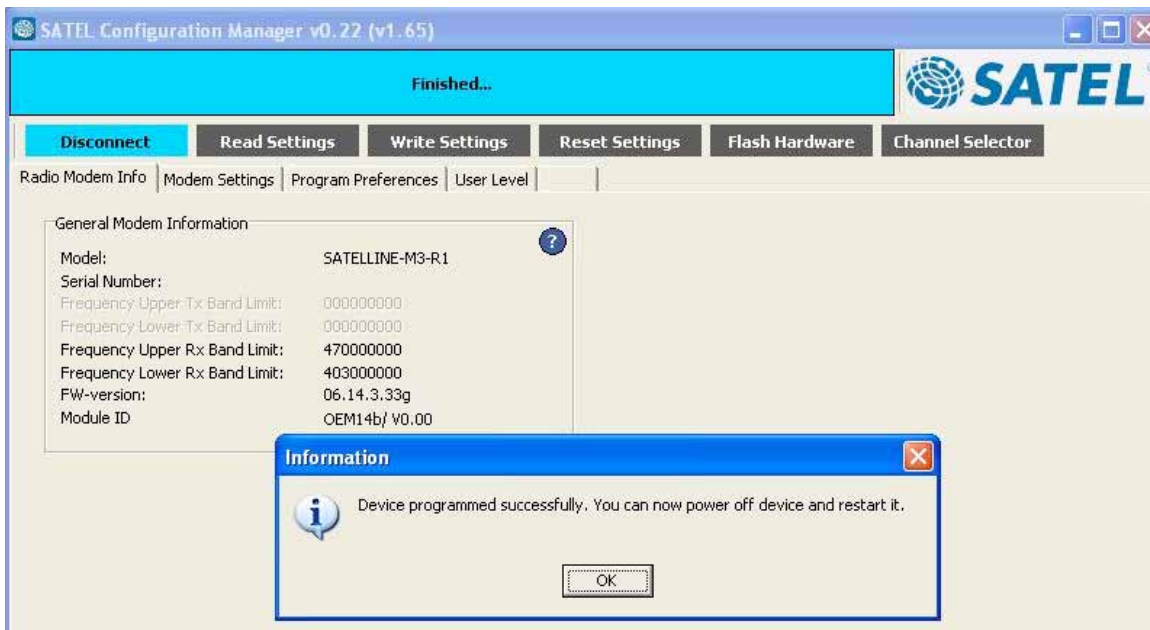
To start flashing procedure, Press Flash Hardware and Press "Yes or No" accordingly.



Select the program (3as-oemxx-xx-xx-xx-xx.syy). The flashing starts immediately, when "open" is pressed. Wait a while flashing takes about 2.5 minutes.

PLEASE NOTE! Do not disconnect the supply power or interfere with the modem in any other way during the flashing procedure. Interferences may destroy the procedure and it may no longer be possible to flash the module again.

When the text: "Device programmed successfully..." appears, the flashing is finished and the module must be switched OFF and ON, before it is ready to use. When this is done, press Connect then "Read settings" to verify that the new FW has been downloaded.



5.1.2 Channel Selector

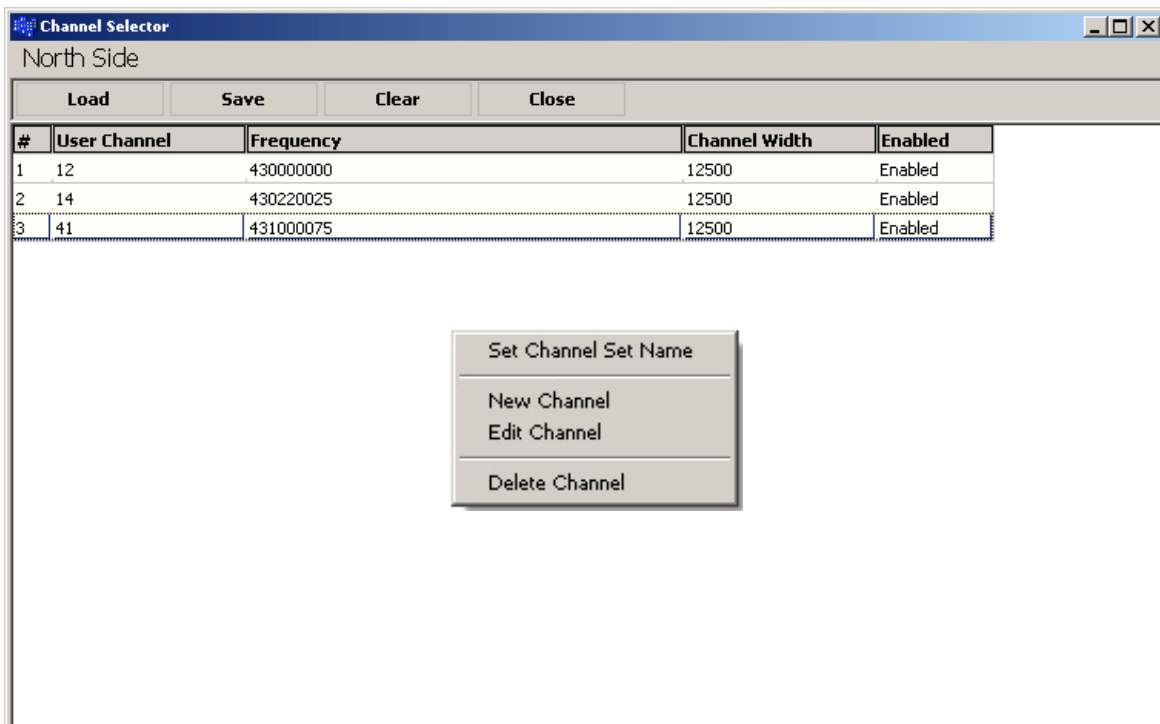
Channel Selector is a tool to make a channel setup. The setup can be loaded to the modem's memory by clicking the "Write Settings" -tab.




Options:

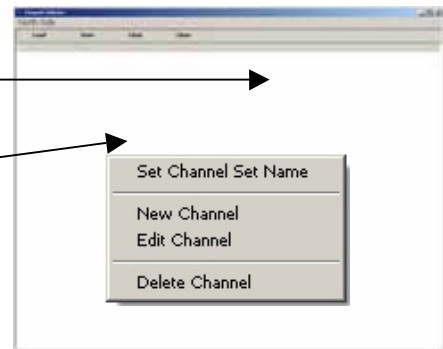
Load, Save, Clear and Close.

Set Channel Name, New Channel, Edit Channel and Delete Channel.

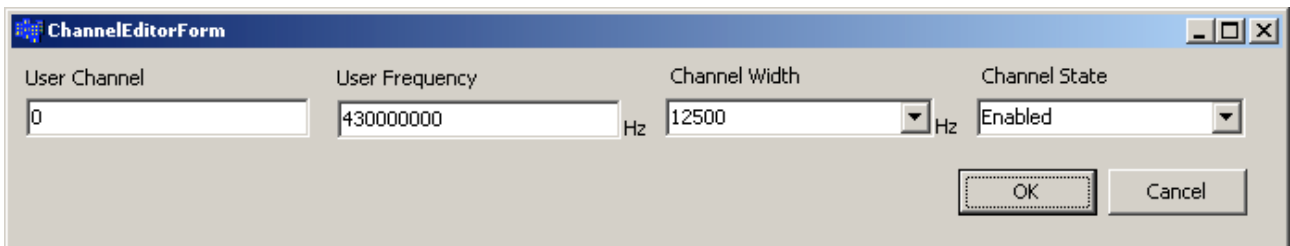


How to make a new channel setup:

- o Open the "Channel Selector"  and make a mouse click on the white area of the Channel Selector window using the second button (usually "right click").
- o Click Set Channel Set Name, and define a name for the channel list.



- o Right click on the grey area and select New Channel and the following window opens.



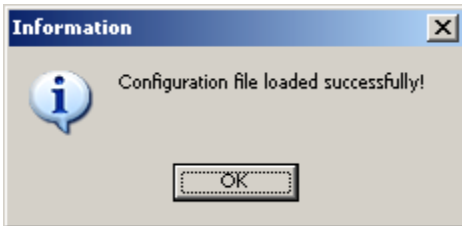
- User Channel = Any number given by the user or, for example, the SATEL distributor.
- User Frequency = Any given frequency which is available to the modem.
- Channel Width = Selected Channel Width, usually given by authorities.
- Channel State = Enabled or Disabled.

#	User Channel	Frequency	Channel Width	Enabled
1	10	430000000	12500	Disabled
2	15	431000000	25000	Enabled
3	22	432000125	12500	Enabled
4	30	432000300	25000	Enabled

6 LOAD AND SAVE CONFIGURATIONS

6.1 Load Configuration From File

The configurations made by the Configuration Manager can be loaded from PC to the CM. Select Load Configuration From File and Open the desired cfg-file. When done, all settings become red and the following info table opens. The settings are moved to the modem by pressing Write Settings-tab.



6.2 Save Configuration to File

All configurations made by the Configuration Manager can be saved to the PC. Saving is done by pressing Select Save Configurations To File and selecting the directory where the settings will be saved.



6.3 Save Configuration as Text

All configurations made by the Configuration Manager can be saved as a text-file to the PC. This feature makes it possible to use settings for other purposes, for example printing etc.

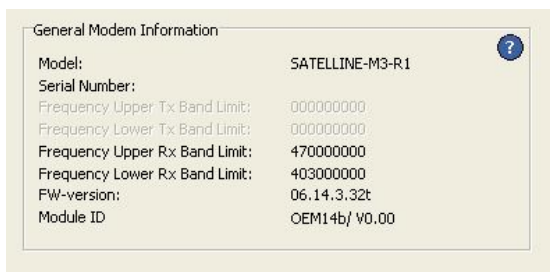
7 SETUP LEVEL

Radio Modem Info, Modem Settings, Program Preferences, User Level Settings, Logs.



7.1 Radio Modem Info

Information about the radio type, S/N, ID etc.



7.2 Modem Settings

7.2.1 How to change values

1. Values without -button (like RX Frequency). Type new value and accept by Enter. When the value is changed the name of the box becomes red.
2. Values with -button. Select new value and "right click" or press Enter.
3. The changed values will be sent to the modem when **Write Settings** is pressed.
4. When the radio modem has accepted the changes the red colour changes back to normal.

7.2.2 Basic Settings

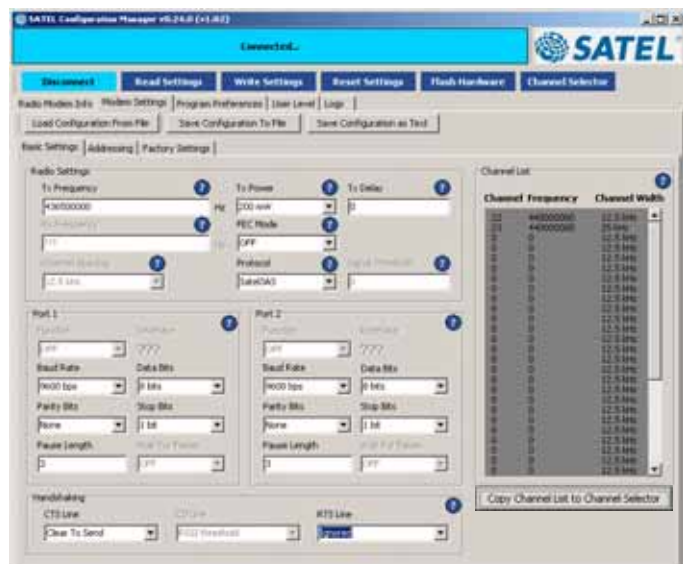
Radio Settings

Options:

TX/RX-Frequency, Channel Spacing, TX-Power, FEC Mode, Protocol, TX Delay, Signal Threshold.

Port 1 and 2 options

The ports are functioning according to the device hardware recognition.



The alternatives are:

One port:

- o Port 2 grey or invisible.

Two ports, one per time:

- o When one is selected the other goes OFF.

Two ports both available:

- o Both ports can be set separately.

Port 1

Options:

Function, Interface, Baud Rate, Data Bits, Parity Bits, Stop Bits, Pause Length, Wait For Pause

Port 2

Options:

Function, Interface, Baud Rate, Data Bits, Parity Bits, Stop Bits, Pause Length, Wait For Pause

Handshaking

Options:

CTS Line, CD Line, RTS Line.

Channel List

Options:

Channel, Frequency, Channel Width

Copy Channel To Channel Selector

When this button is pressed the channel list from the modem is copied to the Channel Selector of the CM. This function is practical if the channel list should be copied to another modem, edited or saved etc.

7.2.3 Addressing

Options:

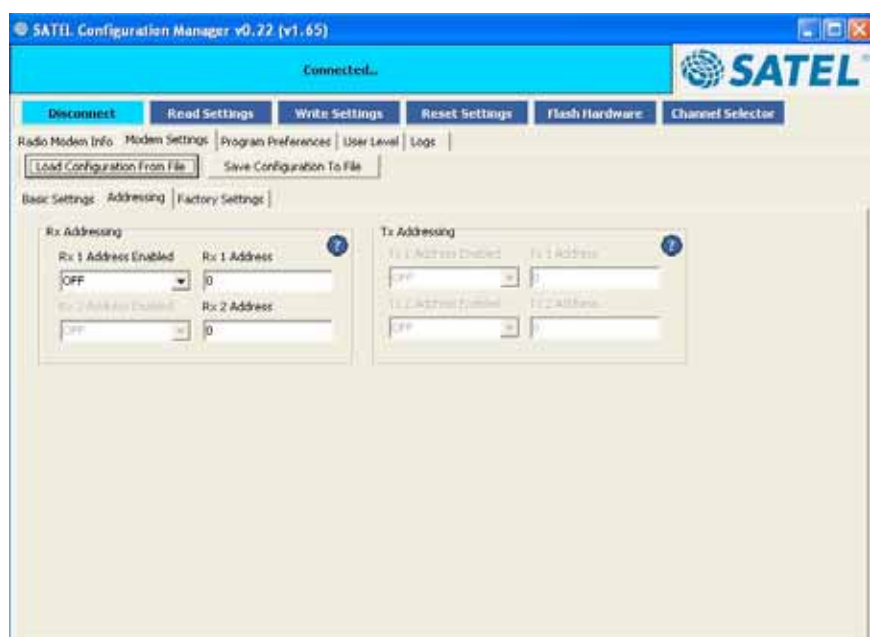
RX Addressing, TX Addressing.

RX/TX Address Enabled ON/OFF

RX/TX 1 Address xxxxxx.

Addresses can be used to route a data message to the desired destination or to separate two parallel networks from each other.

The radio modem contains one transmission and one reception address, which is known as the



primary address. This primary address is used whenever data from the serial interface is transmitted. At the receiving end, the radio modem will receive using this address.

7.2.4 Factory Settings

Options:

Customer Serial Number,
Configuration Number,
Model

Customer Serial Number

Any number that can be set by the author.

The maximum number is 32 alphanumeric characters.

The number is accepted by Enter.

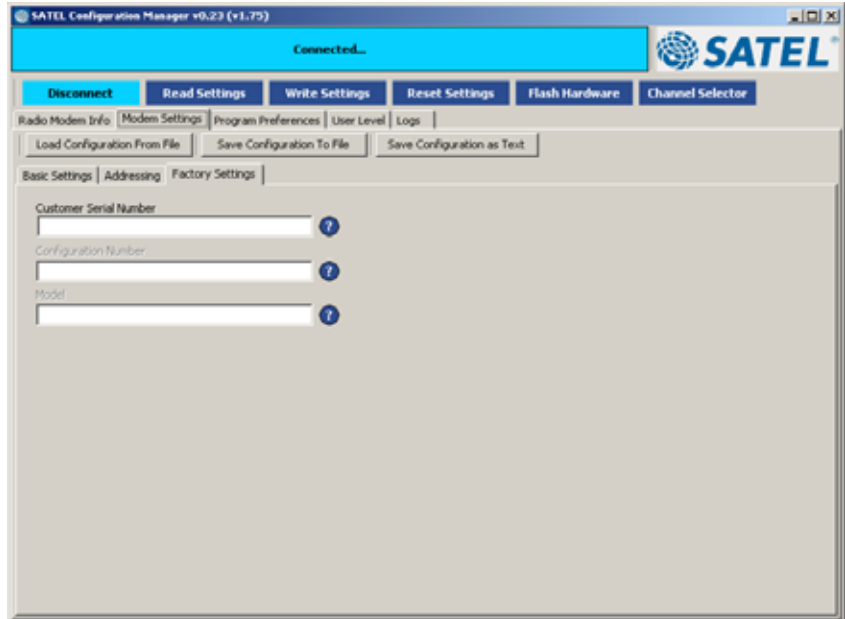
Configuration Number

Any number that can be set by the author. The maximum number is 32 alphanumeric characters.

The number is accepted by Enter.

Model

Any number that can be set by the author. The maximum number is 32 alphanumeric characters. The number is accepted by Enter.



7.3 Program Preferences

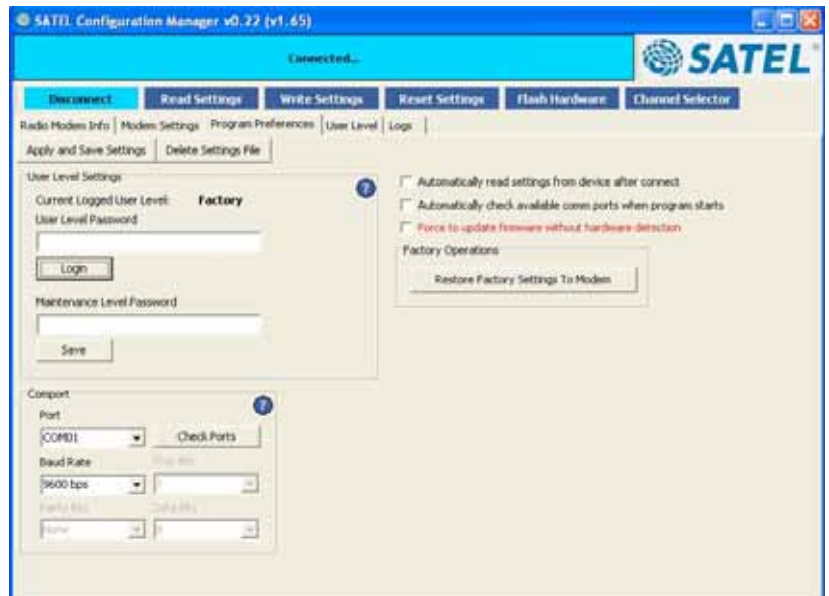
Options:
User Level Settings,
Comport.

User Level Password

The levels are:

Factory, Maintenance and User.

1. The factory level password is given to authorized dealers only. It gives the user access to all functions of the software.
2. The Maintenance level password gives access to functions that are defined by the "Factory Level".
3. When no password is given the user has access to the standard features.



Type in the correct password xxxxxxxx (by e-mail from the SATEL Oy) and press Login. Change and save if needed.

Comport

Defines settings for the PC's serial port communication.

Check Ports

Will automatically check all available free ports of the PC. Press Check Ports and select free port. Note that if this program uses the port, it is already reserved and will not be shown anymore as a free port.

Automatically read settings from device after connected

When this is activated, the program reads automatically settings from the modem when the connection is established. If this is not selected, the values must be read by pressing "Read Settings".

Automatically check available COM ports when program starts

When this is activated, the program automatically reads available free ports.

Force to update firmware without hardware detection

The CM automatically recognizes the hardware and checks that the FW is correct for the modem. In case the flash operation fails, it is recommended to use this option.

Restore Factory Settings To Modem

Restores the settings as they were originally set at the factory.

Note! Changes made in this page come effective by pressing "Apply and Save Settings".

7.4 User Level settings

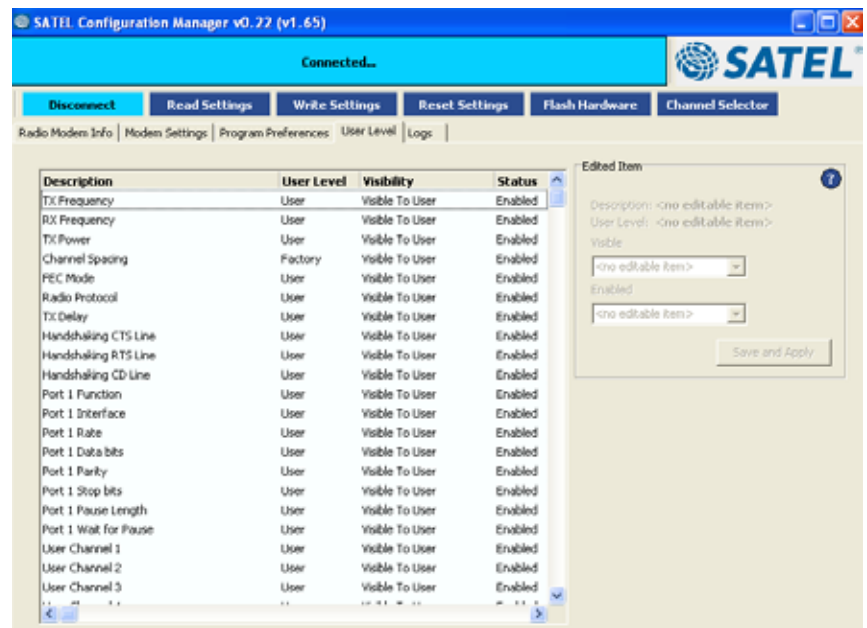
Options:

Description, User Level, Visibility, Status, Edited Item.

These settings are used to select which item can be seen or used on the main menu window.

If a "higher level" user, like Factory Level, has made changes, the "lower level" user cannot change it.

Select an item from the "Description" and make changes according to your choice. To make changes valid, press "Apply".



Description = Defines how the item is seen in the window

User Level = Defines the level at which individuals have rights to control the item

Visibility = Defines if the item is visible for the user or not

Status = Defines if the item can be used by the user or not

Visible

The item can be either visible or hidden from the user.

Enabled

The item can be either disabled or enabled from the user.

7.5 Logs

General information for follow-up and service.